

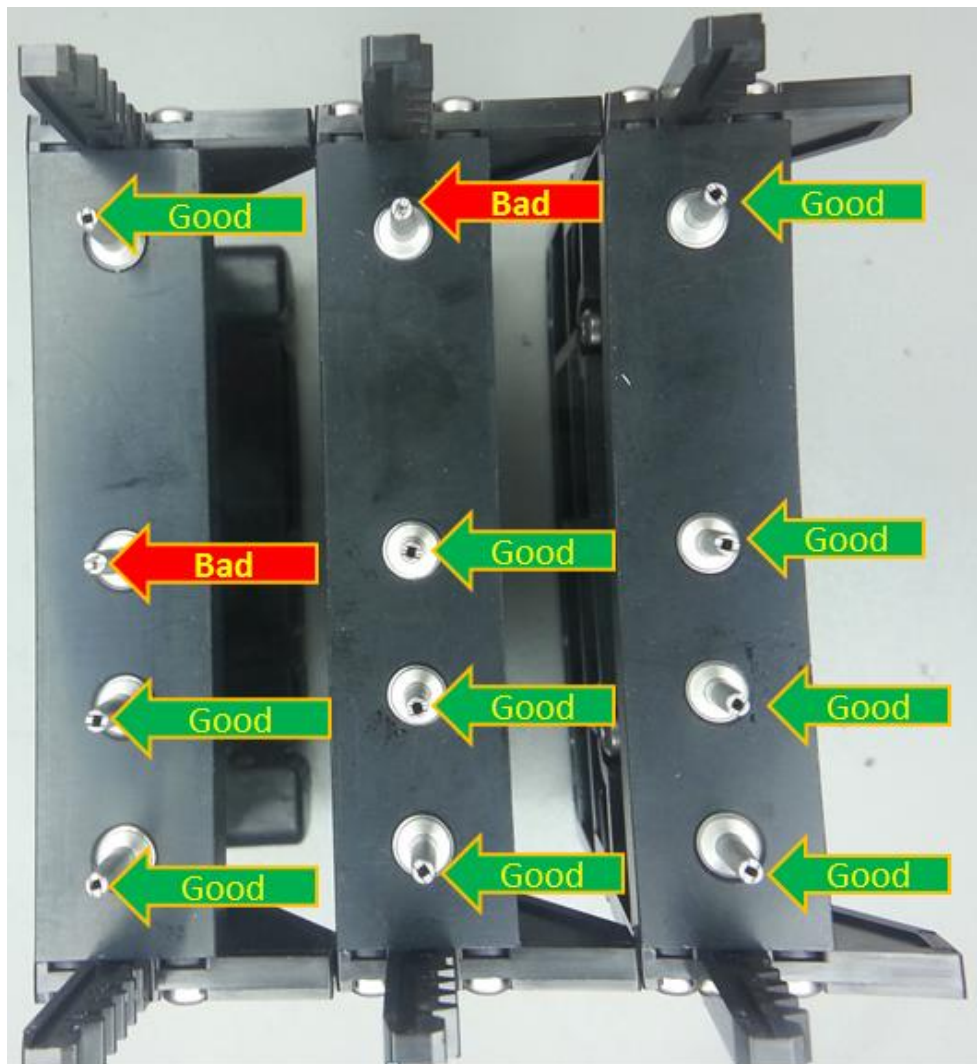
Objective: This week's issue will cover the following subject.

🎨 HP T4 Adapter

We have seen a couple of sites complain about one specific color not filling cartridges when using the new HP T4 adapter. The HP T4 adapter allows the ink Center to Fill the HP 93x and 95X cartridges.

If you are troubleshooting an issue similar to what is described above, check the adapters for obstructions or clogs in the septum.

Please reference the photo below. Note: 3 adapter towers are being shown.



Contact Information For service related support, please call RIS @ 1-858-779-9148 Option 3

HELP tab has a new link. Please make a note of it.

The following link will take you to the help tab. <http://training.retailinkjet.com/>

The location of the "Top 10 Issues" platform has changed. Please bookmark the following URL for easy access – <http://training.retailinkjet.com/top10/>